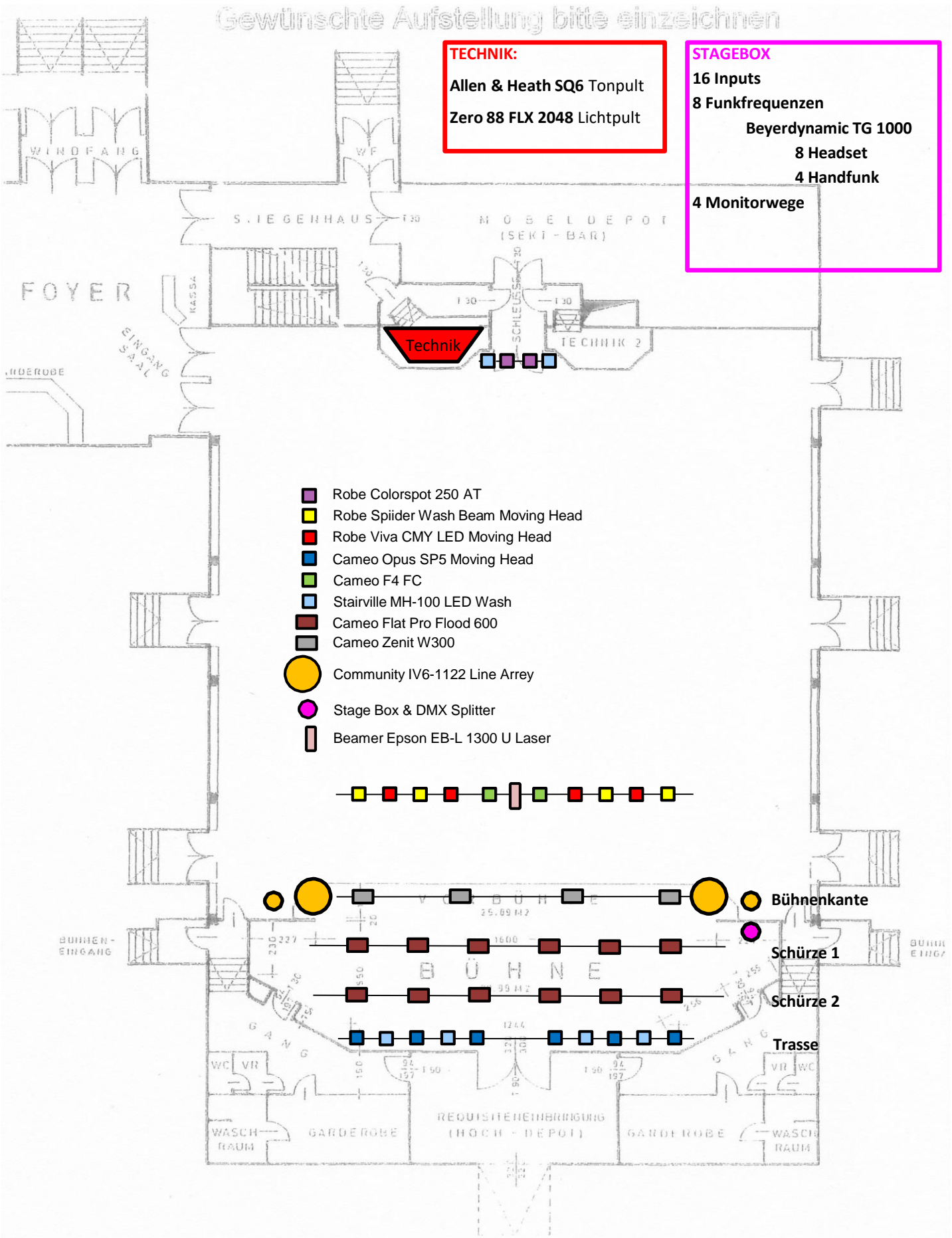


Gewünschte Aufstellung bitte einzeichnen

TECHNIK:
 Allen & Heath SQ6 Tonpult
 Zero 88 FLX 2048 Lichtpult

STAGEBOX
 16 Inputs
 8 Funkfrequenzen
 Beyerdynamic TG 1000
 8 Headset
 4 Handfunk
 4 Monitorwege



- Robe Colorspot 250 AT
- Robe Spider Wash Beam Moving Head
- Robe Viva CMY LED Moving Head
- Cameo Opus SP5 Moving Head
- Cameo F4 FC
- Stairville MH-100 LED Wash
- Cameo Flat Pro Flood 600
- Cameo Zenit W300
- Community IV6-1122 Line Arrey
- Stage Box & DMX Splitter
- Beamer Epson EB-L 1300 U Laser

